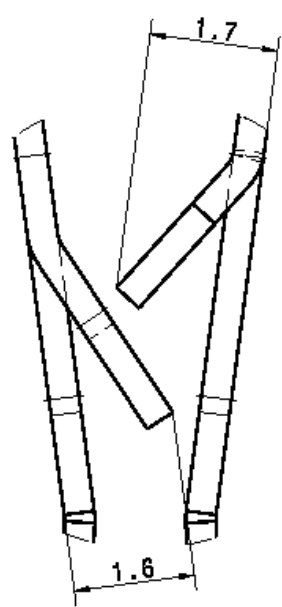


Variant	Acabado / Finishes
00	Delta-Tone 2c gris / RNS:480h Delta-Tone 2c silver / NSS:480h
01	Delta-Tone 2c + Delta-Seal GZ gris 2c / RNS:480h Delta-Tone 2c + Delta-Seal GZ silver 2c / NSS:480h
02	Sin Without
03	Delta-Tone 1c + Delta-Seal negro 2c / RNS:240h Delta-Tone 1c + Delta-Seal black 2c / NSS:240h
04	Delta-Protekt KL-100 3c + VH-302 GZ gris 1c / RNS:720h Delta-Protekt KL-100 3c + VH-302 GZ grey 1c / NSS:720h
05	Delta-Tone 2c + Delta-Seal negro 2c / RNS:480h Delta-Tone 2c + Delta-Seal black 2c / NSS:480h

**Detalle "A"**  
 ("A" Detail)  
 Scale 10:1



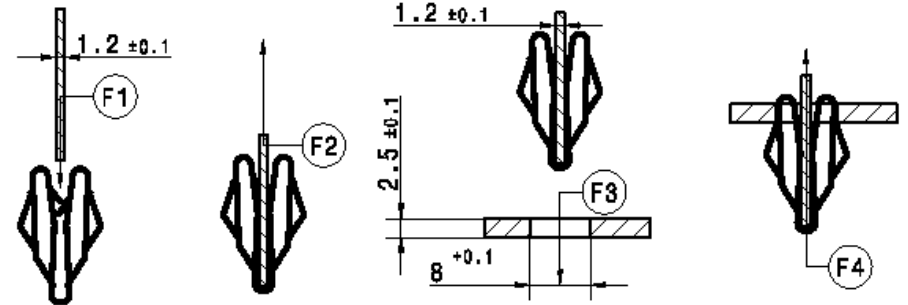
**CONDICIONES DE MONTAJE:**

-Clip adecuado para montaje en chapa acero pintada, espesor 0,7...2,5mm; agujero rectang. ancho 8..8,2mm.  
 -Premontaje sobre nervio plastico 1,2 ±0,1mm.  
 Esfuerzo montaje nervio.(premontaje panel): 80N.Max.(F1)  
 Esfuerzo retención nervio: 20N.Min.(F2)  
 -Montaje clip sobre aguj. ancho 8+0,1x16(Min) en chapa acero espesor 2,5±0,1; agujero aristas suavizadas R=0,1:  
 Esfuerzo montaje (Aguj.ancho=8+0,1mm.): 160N.Max. (F3)  
 Esfuerzo desmontaje(Aguj.ancho=8+0,1mm.):  
 Primer desmontaje: 140N.Min.(F4) 240N.Max.(F4)  
 Segundo desmontaje: 100N.Min(F4)  
 (En desmontaje, el clip permanece sobre nervio central.)

**ASSEMBLY CONDITIONS:**

-Clip could be used on painted steel material,thickness 0,7..2,5mm.; rectangular hole width 8..8,2mm.  
 -Pre-assembly on plastic rib 1,2 ±0,1mm.  
 Push on Force.(pre-assembly to trim): 80N.Max.(F1)  
 Pull out Force from rib.(retaining force): 20N.Min.(F2)  
 -Assembly on hole size 8+0,1x16(Min.) in 2,5±0,1mm.thick steel material; smoothed edges hole R=0,1:  
 Push on Force (hole width=8+0,1mm.): 160N.Max. (F3)  
 Pull out Force(hole width=8+0,1mm.):  
 First Pull out: 140N.Min.(F4) 240N.Max.(F4)  
 After second Push in/Pull out: 100N.Min(F4)  
 (For Pull out, clip remains on central rib.)

El proceso de montaje en automático de la pieza requiere previamente la consulta a A.Raymond Tecniacero.  
 Automatic processing of the part requires prior consultation with A.Raymond Tecniacero.



REV.	Cont.	Modification description	Date	Name
00	-	Actualizar tolerancias según nivel previo. / Tolerances update acc.previous level.	29.06.13	JFO
01	-	Actualizado I-Way; I-Way updates.	28.04.13	JFO



Ctra. Manresa a Berga km 0,5  
 Spain - 08272 Sant Fruitós de Bages  
 Tel +34 938 771 314  
 Fax +34 938 770 280

Si tuvieran problemas de comprensión, por favor soliciten la versión española a ARaymond antes de usar este plano.  
**"CONDITIONS OF USE"**  
 This drawing and all information (the "Drawing") disclosed are the exclusive property of A.Raymond.  
 By using this Drawing the Addressee acknowledges and accepts that this Drawing (1) is covered by A.Raymond intellectual property rights or know-how and (2) is provided under the following conditions who represent a Deposit Agreement. This Drawing is for Addressee internal use only limited to its estimation. Without prior written consent of A.Raymond, no permission or rights for any purpose, is hereby granted, such as, without any limitation, (1) the copy, in part or entirely, (2) and/or the presentation, in part or entirely, to any other third party outside the Addressee company or in the company but with no interest, (3) and/or the distribution of the Drawing, in part or entirely, in any medium, (4) and/or the creation of any derivative work. In case of breach of these conditions, Addressee shall indemnify A.Raymond from and against all damages (compensatory or consequential), costs, expenses and charges, caused or arising out of or attributable to its willful misconduct, fraud, negligence, infringement of A.Raymond Intellectual Property rights. If the Addressee does not accept these conditions, please notify A.Raymond sender immediately.

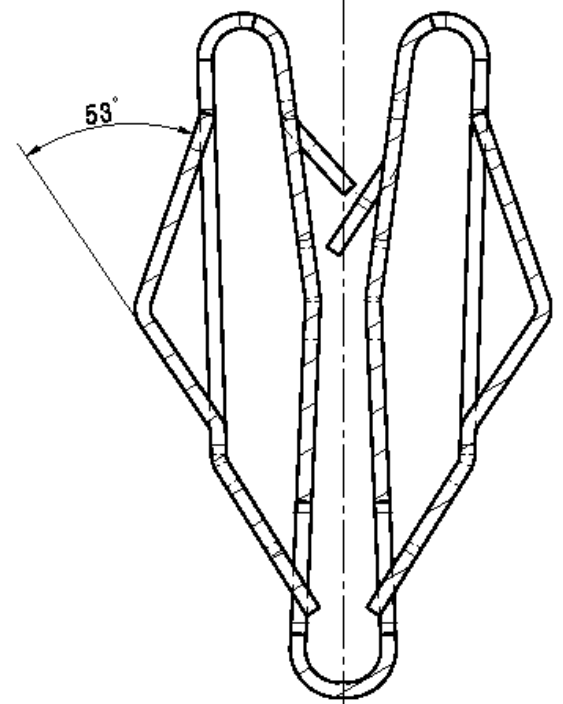
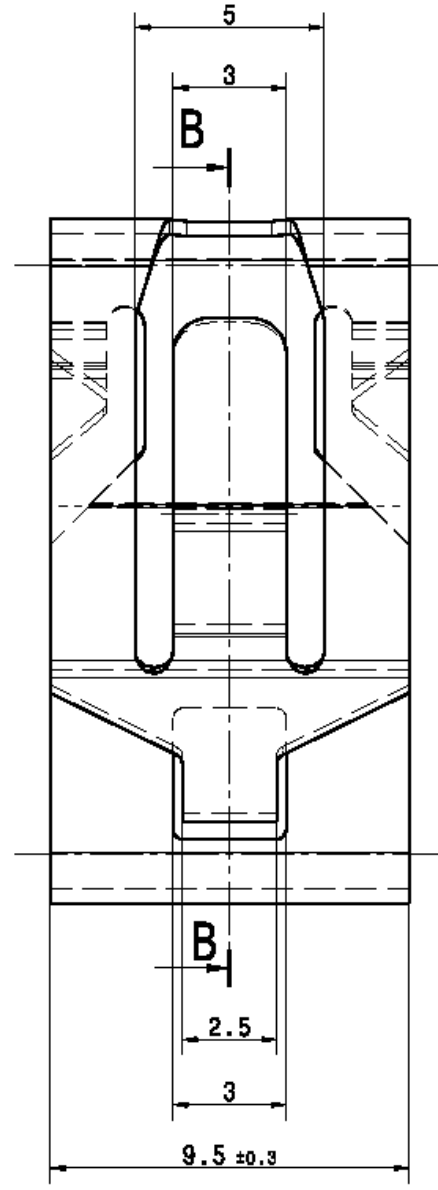
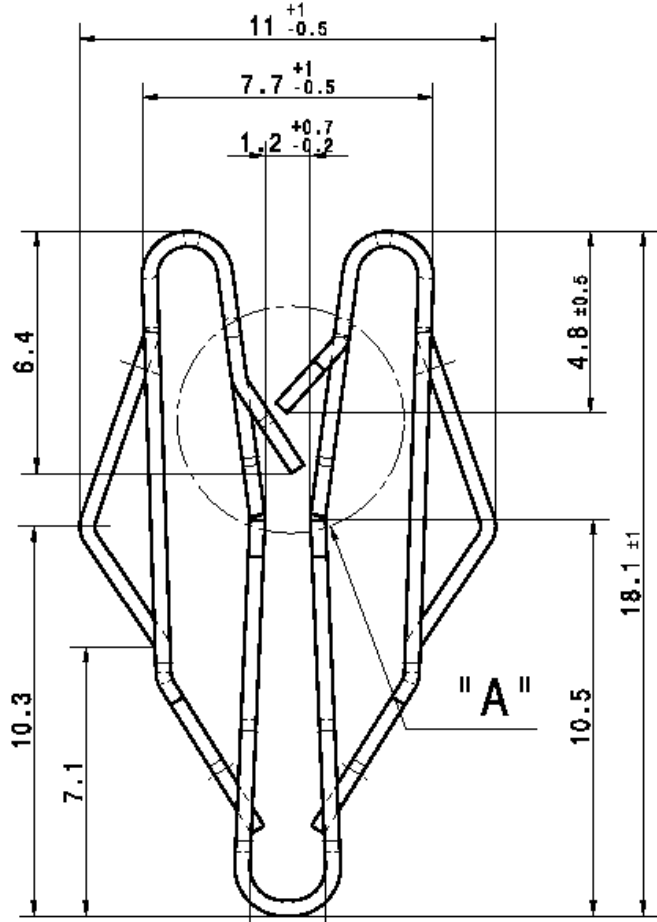
Ref. patentes / Patent rights: Código SAFIX / Classification: CBA--

Nº Proyecto / Project No.		Sustituye / Origin		Resp de proyecto / Project Manager	
Escala / scale		Tolerancias generales / General tolerance		Fecha / date	
Format		Módulo / Module		Preparado por / Prepared by	
Aprobado / Approved		Espesor mat. / Mat. thickness		Volumen / volume (m³)	
Aprobado / Approved		Espesor mat. / Mat. thickness		Volumen / volume (m³)	
Aprobado / Approved		Espesor mat. / Mat. thickness		Volumen / volume (m³)	

Acabado / finish: See parts list Ver dibujo  
 Tratamiento mat. / Material treatment: Templado bainítico 435-535 HV Austenpered 435-535 HV  
 Material / Material: C67S EN 10132-4

Denominación / Title: **Fijación panel Trim fastener**

Número / Part no.	Tipo dibujo / Drawing type
<b>151898-0-00</b>	<b>C-Customer</b>
Ref. cliente / Customer part no.	Noja / Sheet
	<b>1/1</b>
CAD system & version	Nombre fichero / Filename
CATIA V5 R19 SP9	151898-0000



**Sección B-B**  
 (B-B Section)  
**VISTA 3D**  
 / (3D VIEW)  
 Scale 1:1

>400 <= 1000	±2
>120 <= 400	±1.5
> 30 <= 120	±1
> 6 <= 30	±0.5
<= 6	±0.3
Angulo / Angle	±5°

Tolerancias generales para cotas sin especificar.  
 General tolerances for nominal dimensions without specified tolerances.

VERIFICAR LA ESCALA DESPUÉS DE LA FOTOCOPIA / BEWARE SCALE AFTER COPY

1

2

3

4

1

2

3

4