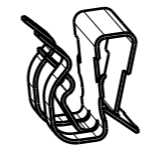


Variant	Acabado / Finishes
00	Zn mecánico 8µ min, pas. transparente / RNS:96h Mechanical Zn plated 8µ min, colourless pas. / NSS:96h
01	Rilsanizado negro brillante 120µ min por cara PA coated bright black 120µ min per side
02	Delta-Tone 2c gris / RNS:480h Delta-Tone 2c silver / NSS:480h
03	Delta-Tone 1c + Delta-Seal negro 2c / RNS:240h Delta-Tone 1c + Delta-Seal black 2c / NSS:240h
04	Sin Without
05	Delta-Tone 2c + Delta-Seal negro 2c / RNS:480h Delta-Tone 2c + Delta-Seal black 2c / NSS:480h



VISTA 3D / (3D VIEW)

Scale 1:1

El proceso de montaje en automático de la pieza requiere previamente la consulta a A.Raymond Tecniacero.
Automatic processing of the part requires prior consultation with A.Raymond Tecniacero.

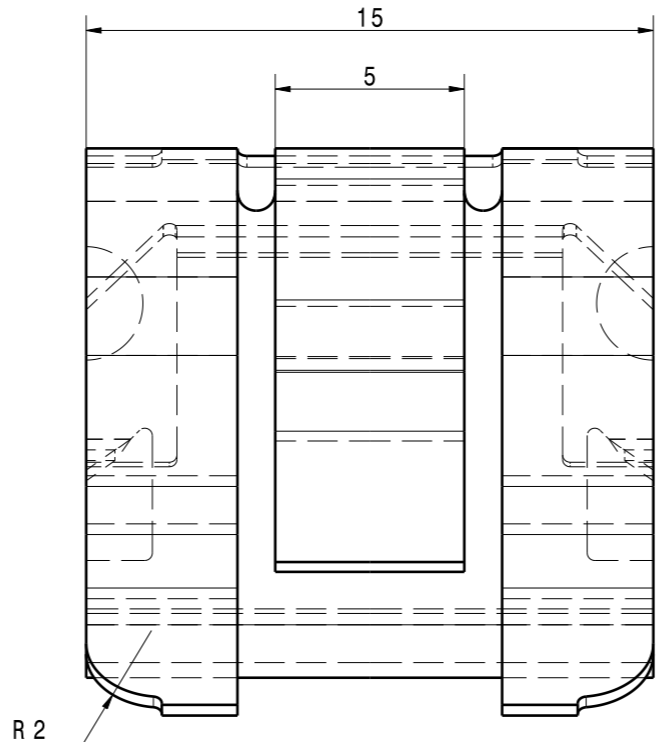
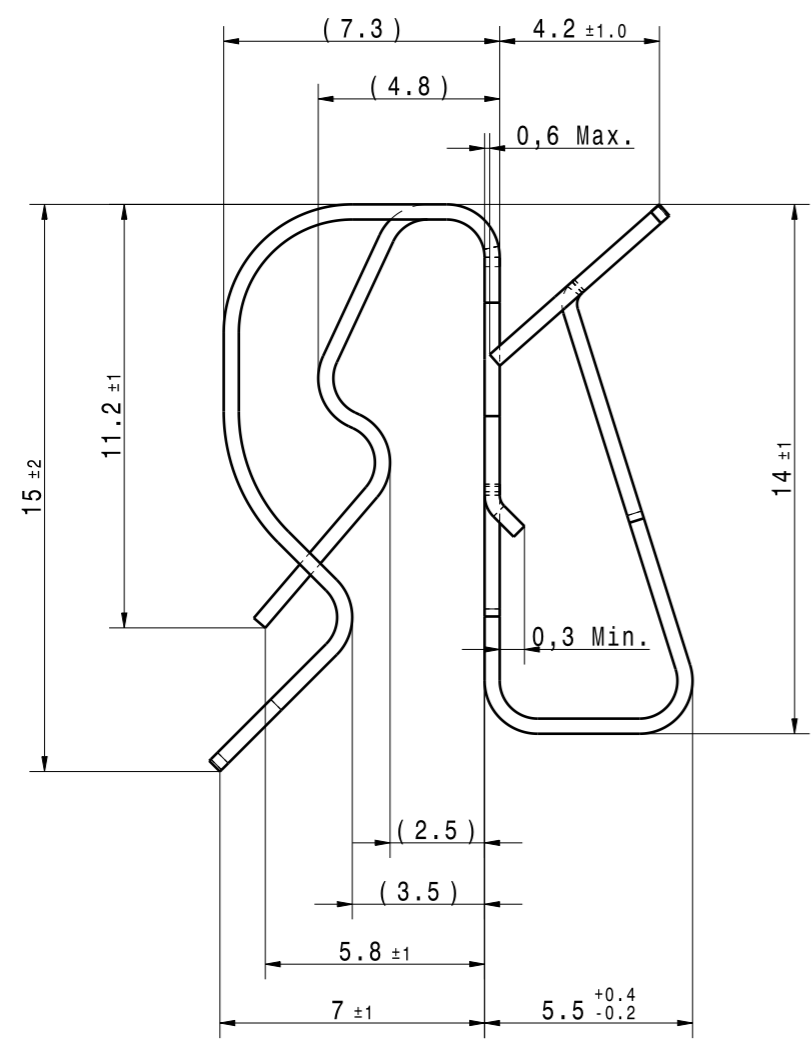
CONDICIONES DE MONTAJE:

- Clip adecuado para tubos $\phi 4... \phi 7$.
- Espesor panel anclaje clip 0,7...3,5mm.

ASSEMBLY CONDITIONS:

- Clip suitable for pipes $\phi 4... \phi 7$.
- Panel thickness to be fitted 0,7...3,5mm.

VERIFICAR LA ESCALA DESPUÉS DE LA FOTOCOPIA / BEWARE SCALE AFTER COPY



PANEL ASSEMBLY FORCES:

- When assembled to 0,7(±0,05) steel panel
PUSH ON Force=75N.Max.
PULL OFF Force=10N.Min.
- When assembled to 3,5(±0,05) steel panel
PUSH ON Force=180N.Max.
PULL OFF Force=25N.Min.

PIPE FEATURE FORCES:

- When $\phi 4(\pm 0,1)$ steel pipe is inserted
PUSH ON Force=35N.Max.
PULL OFF Force=20N.Min.
- When $\phi 7(\pm 0,1)$ steel pipe is inserted
PUSH ON Force=125N.Max.
PULL OFF Force=20N.Min.

>400 <= 1000	±2
>120 <= 400	±1.5
> 30 <= 120	±1
> 6 <= 30	±0.5
<= 6	±0.25
Angulo / Angle	±3°

Tolerancias generales para cotas sin especificar.
General tolerances for nominal dimensions without specified tolerances.

REV.	Quant.	Indice / revision description	Date	Name
Ca	-	Actualizar I-Way; I-Way update.	11.04.13	JPO

ARaymond

Ctra. Manresa a Berga km 0,5
Spain - 08272 Sant Fruitós de Bages
Tel +34 938 771 314
Fax +34 938 770 260

Si tuvieran problemas de comprension, por favor soliciten la version espanola a ARaymond antes de usar este plano.
"CONDITIONS OF USE"
This drawing and all information (the "Drawing") disclosed are the exclusive property of A.Raymond.
By using this Drawing the Addressee acknowledge and accept that this Drawing (1) is covered by A.Raymond intellectual property rights or know-how and (2) is provided under the following conditions who represent a Deposit Agreement. This Drawing is for Addressee internal use only limited to its estimation. Without prior written consent of A.Raymond, no permission or rights for any purpose, is hereby granted, such as, without any limitation, (1) the copy, in part or entirely (2) and/or the presentation, in part or entirely, to any other third party outside the Addressee company or in the company but with no interest (3) and/or the distribution of the Drawings, in part or entirely, in any medium (4) and/or the creation of any derivative work. In case of breach of these conditions, Addressee shall indemnify A.Raymond from and against all damages (compensatory or consequential), costs, expenses and charges, caused or arising out of or attributable to its willful misconduct, fraud, negligence, infringement of A.Raymond Intellectual Property rights. If the Addressee does not accept these conditions, please notify A.Raymond sender immediately.

Ref. patentes / Patent rights		Codigo SAFIX / Classification	
Nº Proyecto / Project No.		Sustituye / Origin	Resp de proyecto / Project Manager
Escala / scale		Tolerancias generales / General tolerance	Fecha / date
Format		Cf nota Cf nota	Preparado por / Prepared by
ALL DIMENSIONS ARE IN MILLIMETERS		Aprobado / Approved	20130411093452
Espesor mat. / Mat. thickness		Volumen / volume (mm³)	Peso / Weight (g)

Acabado / finish
See parts list
Ver dibujo

Tratamiento mat. / Material treatment
Templado bainítico 450-570 HV
Austempered 450-570 HV

Material / Material
C67S EN 10132-4

Denominación / Title
Clip es S
S shaped clip

Número /Part no.
151177-0-00

Ref. cliente / Customer part no.
Hoja / Sheet 1/1

CAD system & version CATIA V5 R19 SP9
Nombre fichero / Filename 151177-0C00