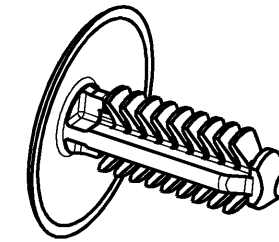


Upinaci otvor : $\varnothing 5 \dots \varnothing 5,4$ mm
 Fastening hole : $\varnothing 5 \dots \varnothing 5,4$ mm
 Pruchozi otvor : $\varnothing 7$ mm
 Through hole : $\varnothing 7$ mm

Upevnovaci tloustka : od 0,8 do 2,0 mm
 Fastening thickness : from 0,8 to 2,0 mm
 Celkova tloustka : od 1,6 do 10,3 mm
 Total thickness : from 1,6 to 10,3 mm

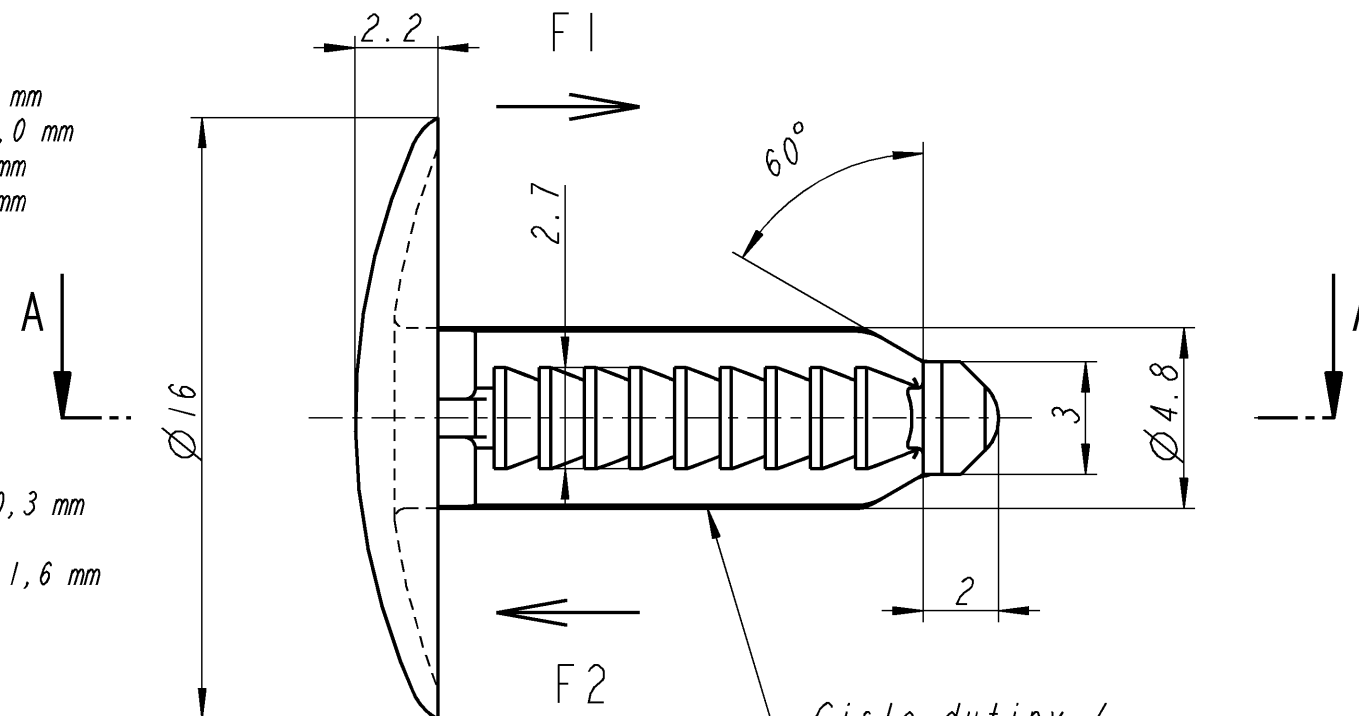
M 2:1



A

F1 - montazni sila do plechu tl. 10,3 mm
 a $\varnothing 5$ mm : MAX 80 N
 F2 - demontazni sila z plechu tl. 1,6 mm
 a $\varnothing 5,4$ mm : MIN 75 N

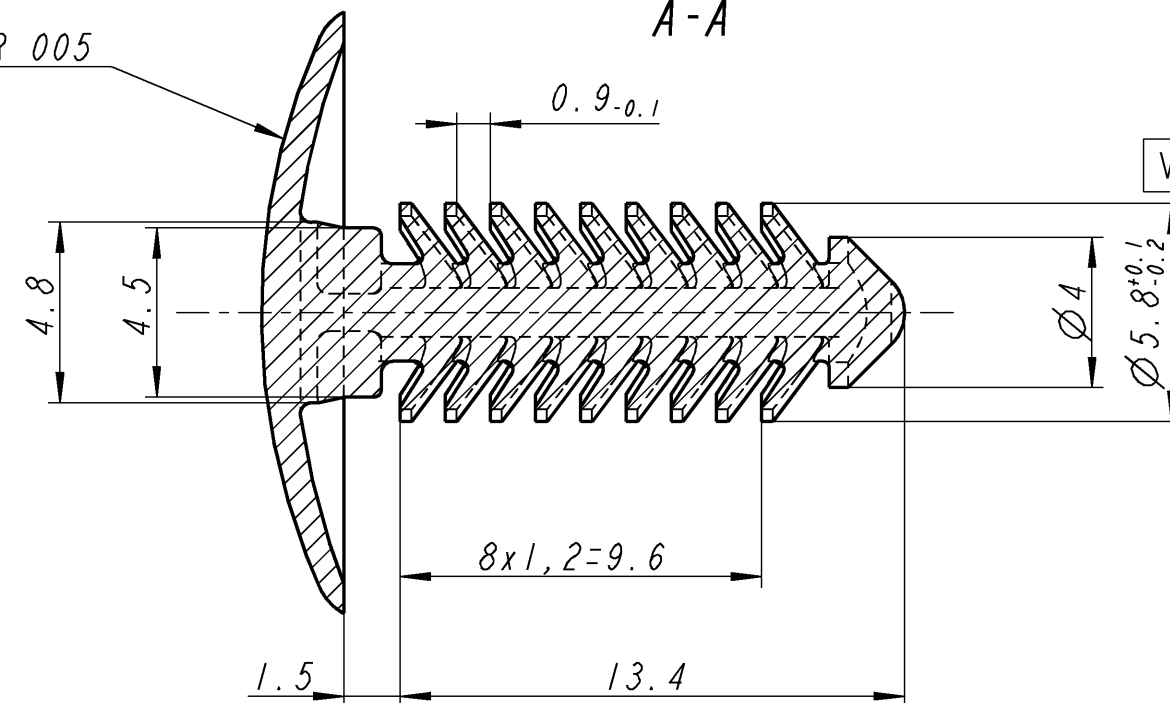
F1 - push in force for steel plate 10,3 mm thickness
 and hole diameter $\varnothing 5$ mm : MAX 80 N
 F2 - pull out force for steel plate 1,6 mm thickness
 and hole diameter $\varnothing 5,4$ mm : MIN 75 N



Cislo dutiny /
Cavity number

DEZEN GR 005

A-A




> 400 ≤ 1000	±2
> 120 ≤ 400	±1,5
> 30 ≤ 120	±1
> 6 ≤ 30	±0,3
≤ 6	±0,2
Uhel/Angle	±3°

Standards:
TSM 0500 G
TSZ 0001 G



B

201 012.002	5555	0000	prirodni/natural
201 012.001	5555	1044	modra / blue
201 012.000	5555	7000	cerna / black
Cislo dilu/Part-No.	Kod mat./Mat. code	Kod barvy/Colour code	Barva / Colour

B add new colour NZ 29/2010 02.03.10 Kr			
A add push and pull forces NZ 19/2006/VYV 11.08.06 Kr			
nove cislovani SAP, nový ramecek			
new SAP numbering, new drawing frame			
Ind.	kolikrat/ how often	Popis / Description	Datum / Date Name
Zmeny / Modifications			
drawing name: 201012_000		model: 201012	Format: DIN A3
 A Raymond S. R. O. SPECIALNI UPINACI SYSTEMY			
Datum/Date		11.08.2006	
Kreslil/Drawn		Krsnak	
C.-prezk./App.		OABE1833611F8616	
F.-prezk./App.			
Q.-prezk./App.			
Patentova prava/ Patent rights		vyhrazena / all rights reserved	
Meritka/Scale		Vseobecne jinak neurcena tolerance/ General tol. unless otherwise specified	
5:1		viz tabulka / see table	
Nahrada za/ Substitute for		201 012.555	
Uprava materialu/ Material treatment		Hmot. Weight [g]	
Material		POM	
Nazev dilu/ Partname			
Clip			
Cis.dilu zakaznika/ Customer part No.		8 103 411	
Cislo dilu/ Part-No.		201 012.000	
		C	

D

...dulezity znak / important characteristic

V

...vyznamny znak / significant characteristic