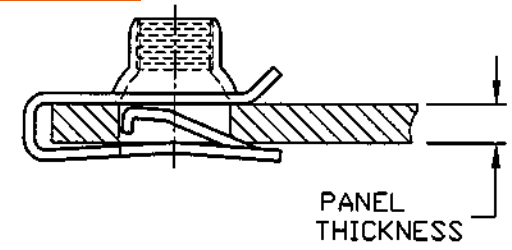
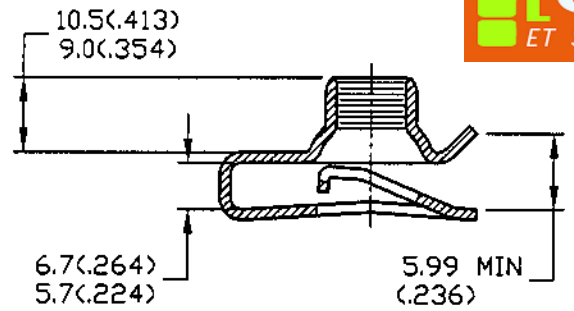
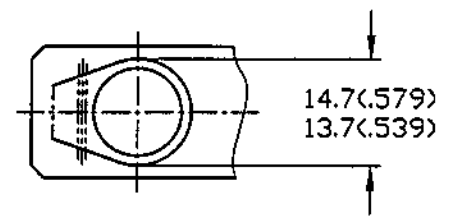
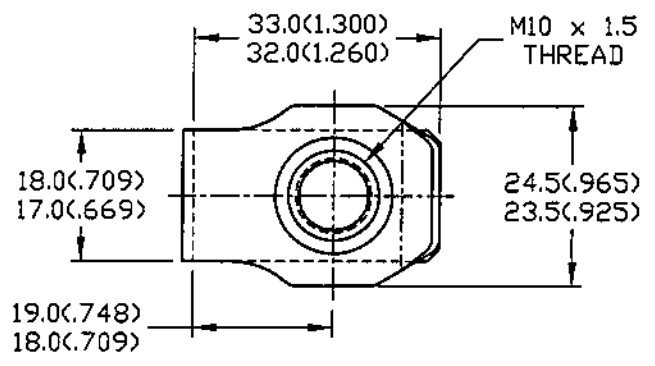


DWG

LUGS100033

FINAL INSPECTION FOR INTERNAL THREADS SHALL CONSIST OF A STANDARD THREAD GAUGE FOR PARTS WITH ELECTROPLATED OR CHEMICALLY DEPOSITED FINISHES. FOR OTHER FINISHES, THREAD INSPECTION WILL MEET A GO TEST CONDUCTED WITH AN UNCOATED (OR ZN PLATED) MATING BOLT, AND A NO-GO TEST CONDUCTED WITH THE THREAD ELEMENT OF A STANDARD GAUGE.



Référence
138 331 003
Matière Acier Phosphaté
(CS-PHO)

TINNERMAN PALNUT
ENGINEERED PRODUCTS, LLC

MATERIAL:
SPRING STEEL-1.40±.05-SAE1050

HARDNESS: ROCKWELL 'C' 43-49

PAL®	PALNUT®	ON SERT®	PUSHNUT®
TITLE M10 x 1.5mm MULTI-THREAD "U" NUT (SHORT) FOR 1.50-5.50 PANEL THICKNESS			
DRAWN:	C.L.	RELEASED	SCALE
DATE:	1/10/77	PART No: LUGS100033	NONE
CHECKED:	<i>Colin 4.06.01</i>	DWG No.	
APPROVED:	<i>496/2001</i>	LUGS100033	

TOLERANCES, UNLESS SPECIFIED:

mm	in
.X±.25	.XX±.010
.XX±.13	.XXX±.005

DATE	REV	DESCRIPTION	BY
2/01/01	C	REDRAWN TO AUTOCAD 2000	MS
12/21/99	B	ADDED CRITERIA FOR THREAD INSPECTION	CJT
5/4/93	A	WAS ON TABULATED SALES DWG.	DMF