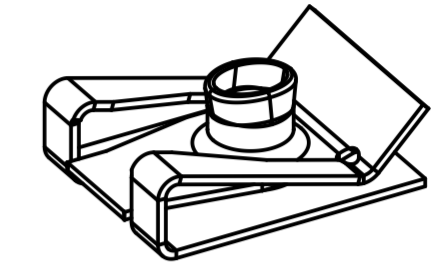
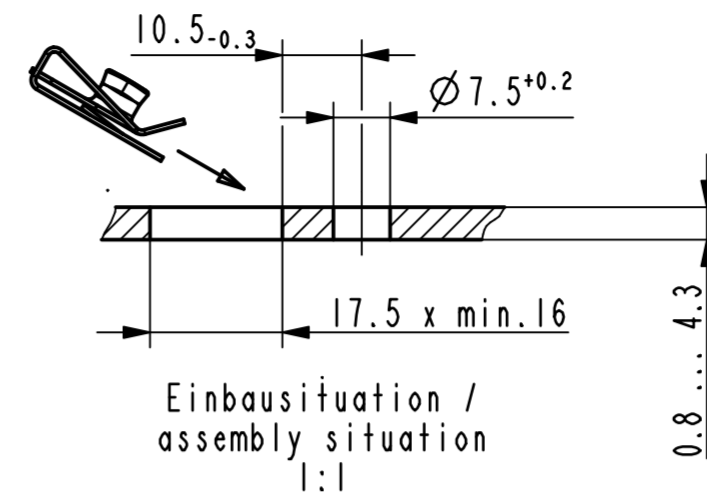
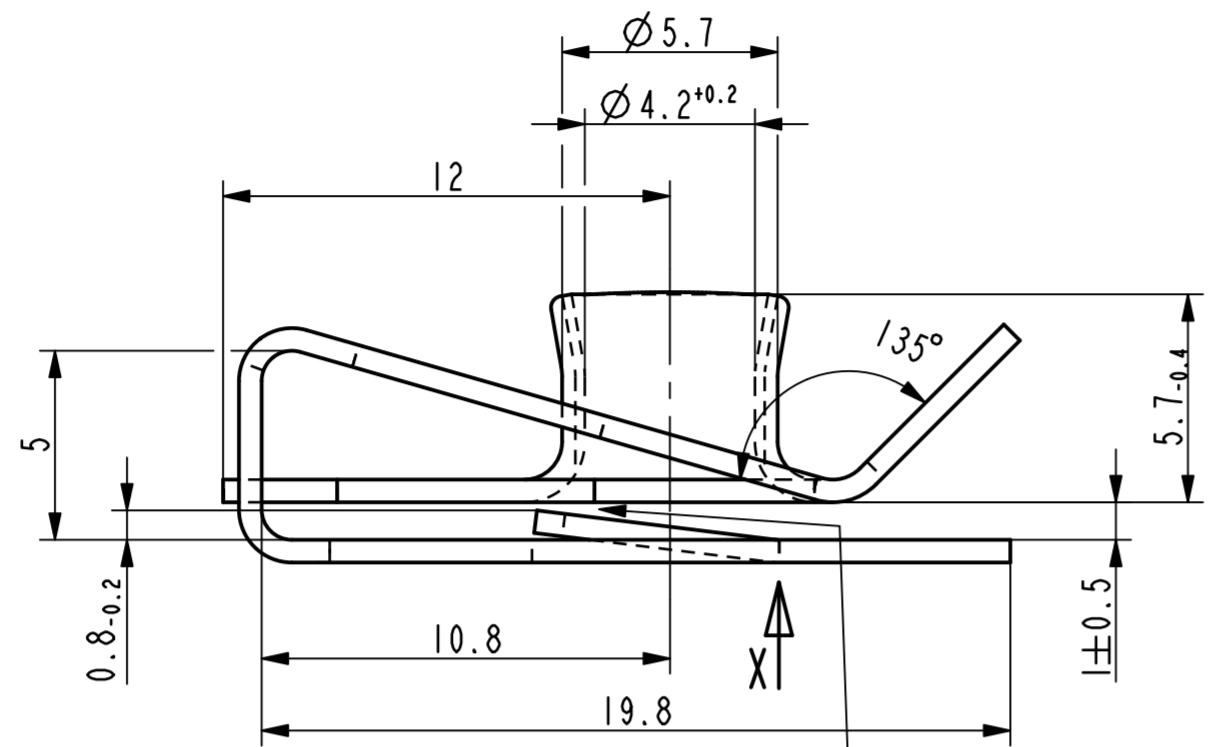


Gewindedurchzug kann nur auf 2 Gaenge mit lehrenhaltiger M5 Schraube geprueft werden / the thread strength can only be tested on 2 turns with a calibrated M5 screw gauge

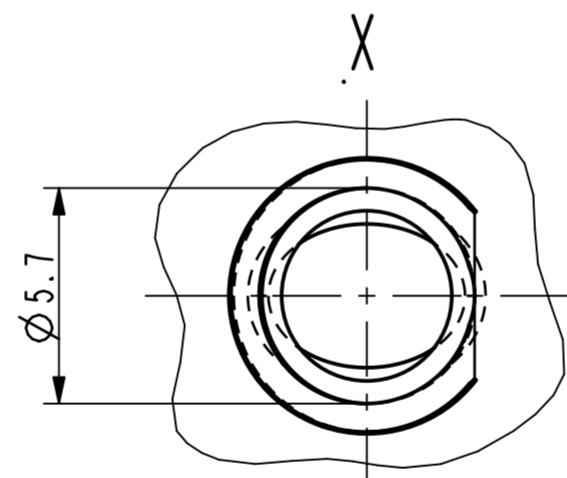
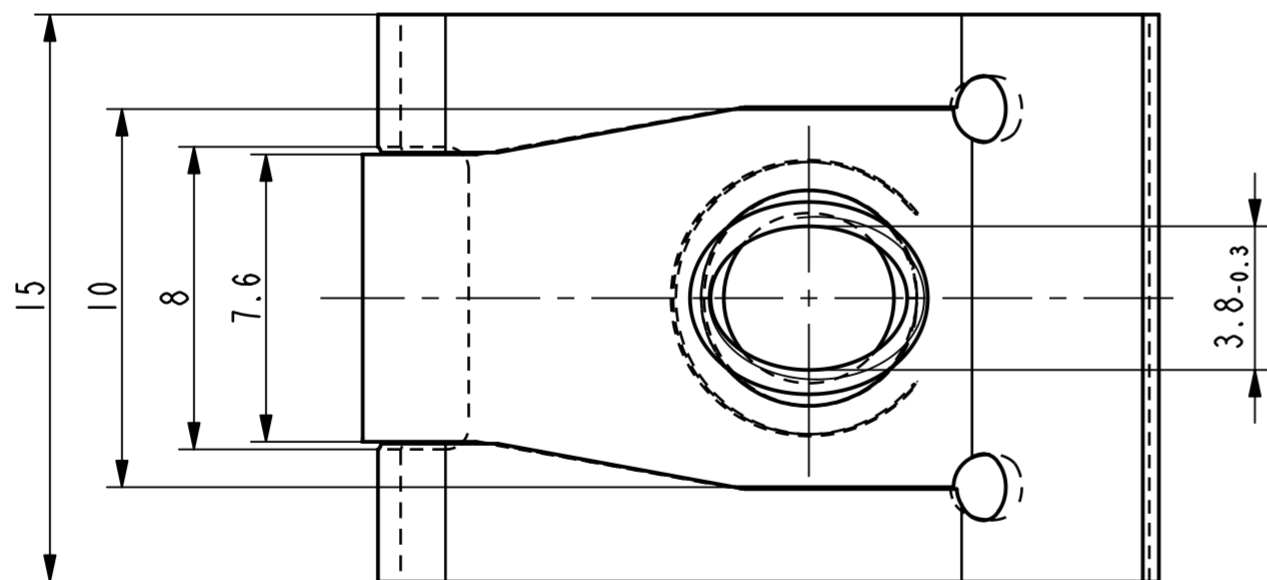
Schwergaengigkeit des Gewindes durch Oberflaechenbeschichtung zulaessig / slow thread engagement caused by the surface finish permissible

Vor Auslegung einer automatisierten Verarbeitung des Teils sollte Ruecksprache mit Fa. ARAYmond gehalten werden. Fully automatic processing of the part requires prior consultation with ARAYmond.



Isometrische Ansicht / isometric view 2:1

Ueberbrueckung der Oeffnung durch metallhaltige Korrosionsschutzbeschichtung zulaessig / surface finish bridging permissible



nicht bemaste Biegeinnenradien R0.8

Rev.	Anzahl/quantity	Aenderungsbeschreibung / modification description	Datum/date	Name
Cd	1x	Oberflaechenvariante hinzugefuegt	21.06.12	Bi
Cc	1x	Oberflaechenvariante 001 (3000) und 002 (3600) entfernt,	17.08.11	Ru
-	-	Bemerkung hinzug.	-	-



Teichstrasse 57
 Germany - 79511 Loerrach
 Phone +49 (0) 7621 174-0
 Fax +49 (0) 7621 174-225

Bei Verstaendnisproblemen beantragen Sie bitte beim Absender die deutsche Fassung vor jeder Anwendung.
"CONDITIONS OF USE"
 This drawing and all information (the "Drawing") disclosed are the exclusive property of ARAYmond. By using this Drawing the Addressee acknowledges and accepts that this Drawing (1) is covered by ARAYmond's intellectual property rights or know-how and (2) is provided under the following conditions which represent a Deposit Agreement. This Drawing is for Addressee's internal use only limited to its estimation. Without prior written consent of ARAYmond, no permission or rights for any purpose, is hereby granted, such as, without any limitation, (3) the copy, in part or entirely, (4) and/or the presentation, in part or entirely, to any other third party outside the Addressee's company or in the company but with no interest (5) and/or the distribution of the Drawing, in part or entirely, in any medium (6) and/or the creation of any derivative work. In case of breach of these conditions, Addressee shall indemnify ARAYmond from and against all damages (compensatory or consequential), costs, expenses and charges, caused or arising out of or attributable to its willful misconduct, fraud, negligence, infringement of ARAYmond's intellectual property rights. If the Addressee does not accept these conditions, please notify ARAYmond immediately.

Intellectual property rights	vorbehalten / all rights reserved		Classification code	AACB
Ersatz fuer/substitute for	015460.C.01/Cb/09.10.2007	Entw.Ref./dev.ref.	Projekt-Nr./project no.	
Masstab/scale	5:1	Format	A2	
Projektion / projection	ALL DIMENSIONS ARE IN MILLIMETERS		Datum/date	17.08.2011
Blechklaerung/met. thickness DIN EN 10140	0.60	Erstellt von/prepared by	Ruzicka	
		Freigegeben/approved	20120621080154	
Oberfl./finish	metallhaltige Korrosionsschutzbeschichtung, Farbe schwarz, GZ	Volumen/volume (mm³)	405.5	Gewicht/weight (g)
	zinc plated / passivated colourless			3.2
Werkstoffbehand./material treatment	zwischenstufenverguetet / austempered 365 ... 465 HV 5			
Werkstoff/material	C45E DIN EN 10132-3			Mat. code
				1040

Bezeichnung/title	Mehrbereichssteckmutter fuer Gewinde M5, selbstsichernd sheet metal nut for thread M5, self-locking		
Teil-Nr. / part no.	015460-0-08	metallhaltige Korrosionsschutzbeschichtung, Farbe silber, GZ	4001
	015460-0-07	metallhaltige Korrosionsschutzbeschichtung, Farbe silber, GZ	4050
	015460-0-06	verzinkt / passiviert farblos zinc plated / passivated colourless	3250
	015460-0-05	metallhaltige Korrosionsschutzbeschichtung, Farbe schwarz, GZ	5443
	015460-0-04	metallhaltige Korrosionsschutzbeschichtung, Farbe silber, GZ	5452
Teil-Nr. / part no.	Oberflaeche / Farbe / finish / colour		Oberfl. Code / finish code
	Ausfuehrung / Execution		

Teil-Nr. / part no.	015460-0-03		Drawing type	C:Customer
Kundenteile-Nr. / customer part no.	-		Blatt / sheet	1 / 1
CAD system & version	ProE WF4		Dateiname / filename	015460-0C00