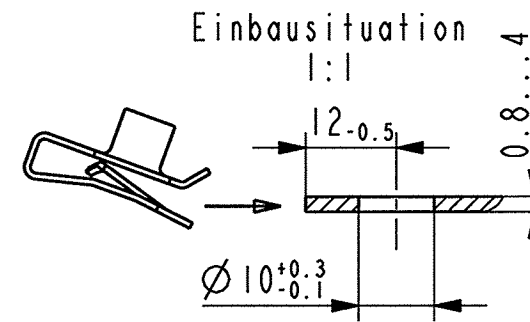
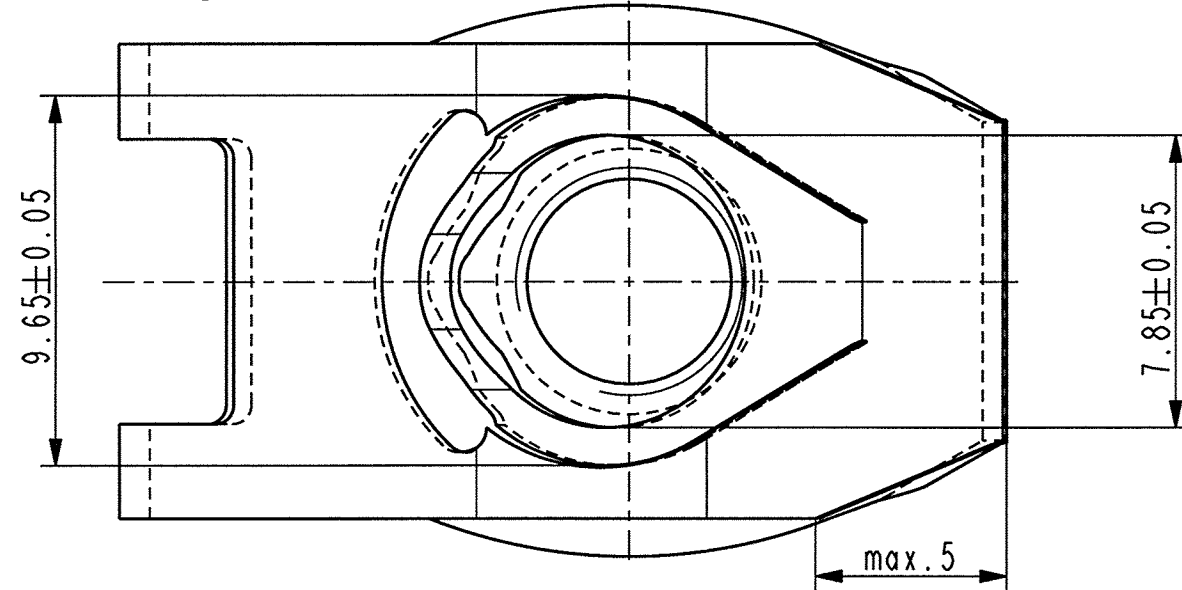


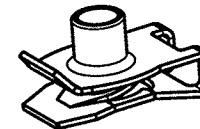
nicht bemaste Biegeinnenradien R0.8

Masse im Zuschnitt

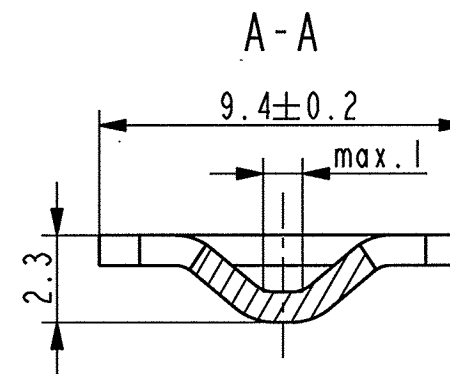


Schwergängigkeit des Gewindes durch metallhaltige Korrosionsschutzbeschichtung zulaessig.

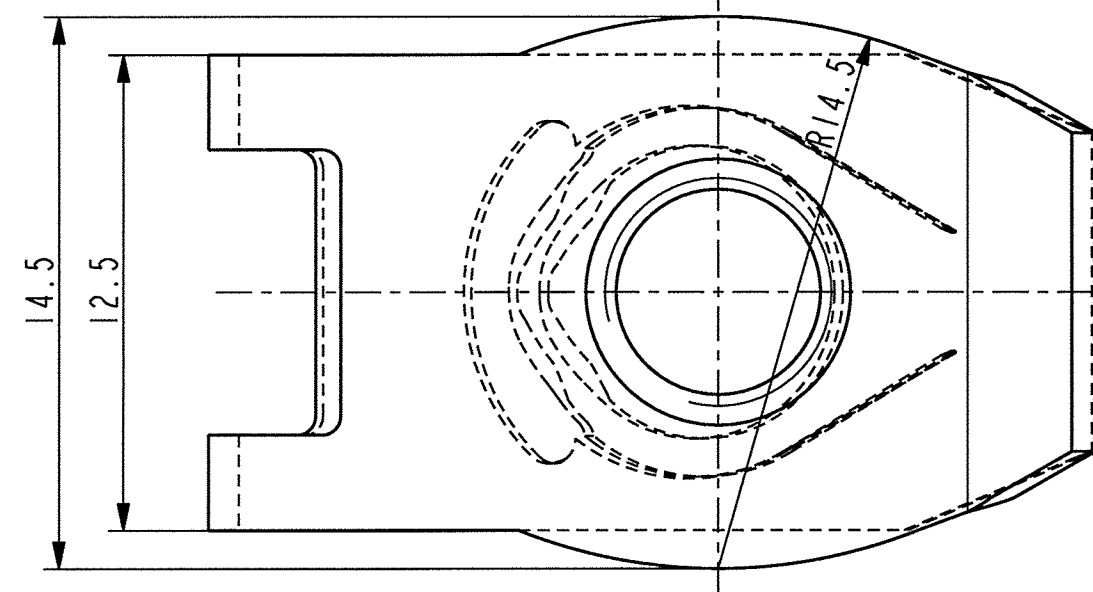
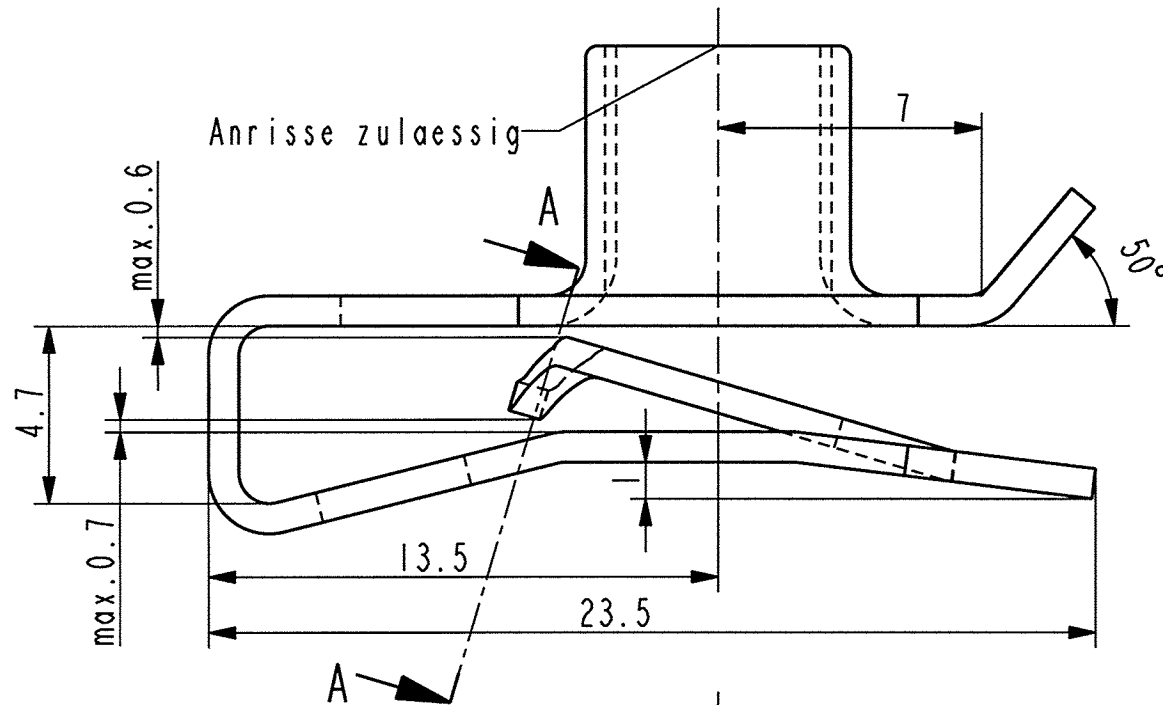
Gewindedurchzug kann nur mit lehrenhaltiger M6 Schraube geprueft werden.



3D-Ansicht 1:1



Anrisse zulaessig



<http://www.cergy-vis.fr>
[CERGY-VIS]
 ET SI ON PARLAIT SERVICE

016398 004	metallh. Korrosionsschutzbeschichtung, Farbe silber, GZ	4004
016398 003	metallh. Korrosionsschutzbeschichtung, Farbe silber, GZ	5452
016398 002	metallh. Korrosionsschutzbeschichtung, Farbe schwarz	5441
Teil-Nr. / Part-No.	Oberflaeche / Farbe / Finish / colour	Kennzahl / Code
Ausfuehrung / Execution		

Vor Auslegung einer automatisierten Verarbeitung des Teils sollte Ruecksprache mit Fa. A.Raymond gehalten werden. Fully automatic processing of the part requires prior consultation with A.Raymond GmbH.

-	-	-	-	-
-	-	-	-	-
-	-	-	-	-
-	-	-	-	-
-	-	-	-	-
-	-	-	-	-
-	-	-	-	-
-	-	-	-	-
-	-	-	-	-
Aa	1x	Oberflaechenvariante hinzugefuegt	08.05.07	Ru
A	-	Indexreform, Art.-Nr. gem. SAP geaend.,	28.05.04	mj
-	-	Zeichnung neu erstellt	-	-
Ind.	Samt vor / how often	Beschreibung / Description	Datum/Date	Name

Aenderungen / Modifications

Bei Verstaendnisproblemen beantragen Sie bitte beim Absender die deutsche Fassung vor jeder Anwendung. "CONDITIONS OF USE" This drawing and all information (the "Drawing") disclosed are the exclusive property of A.Raymond. By using this Drawing the Addressee acknowledge and accept that this Drawing (1) is covered by A.Raymond' intellectual property rights or know-how and (2) is provided under the following conditions who represent a Deposit Agreement. This Drawing is for Addressee' internal use only limited to its estimation. Without prior written consent of A.Raymond, no permission or rights for any purpose, is hereby granted, such as without any limitation, (1) the copy, in part or entirely (2) and/or the presentation, in part or entirely, to any other third party outside the Addressee' company or in the company but with no interest (3) and/or the distribution of the Drawing, in part or entirely, in any medium (4) and/or the creation of any derivative work. In case of breach of these conditions, Addressee shall indemnify A.Raymond from and against all damages (compensatory or consequential), costs, expenses and charges, caused or arising out of or attributable to its willful misconduct, fraud, negligence, infringement of A.Raymond' intellectual property rights. If the Addressee does not accept these conditions, please notify A.Raymond' sender immediately.

Dateiname/ Filename	CAD-PE: 016398_C.01		op
Ersatz fuer/ Substitute for	Art. 016398 Ae. Ind. 5 v. 18.02.2003	Proj.-Nr./ Proj.-No.	RASCH-Code AABCC
Schutzrechte/ Patent rights	vorbehalten / all rights reserved		
Gepr./ App.	F.-gepr./ Produktion AA	Q.-gepr./ Quality Do	S.-gepr./ Patent app. be
Masstab / Scale	Allgem. Tol. wenn nicht anders angegeben/ General tol. unless otherwise specified	Datum/ Date	28.05.2004
5:1	±0.5 / ±3°	Gez./ Drawn	M. Junge
Oberflaechenbehandlg./ Finish	metallh. Korrosionsschutzbeschichtung, Farbe silber	Kennzahl/ Code number	5410
Werkstoffbehandlg./ Material treatment	zwischenstufenverguetet 365 ... 465 HV 5	Blechedicke/ Mat. Thckn. DIN EN 10 140	0.8
Werkstoff/ Material	C 45 E DIN EN 10 132-3	Mat.-Code	1040
Benennung/ Partname	Mehrbereichsblechmutter fuer Gewinde M6		
Teil-Nr. / Part-No.	016398 001	C	