

Variant	Acabado / Finishes
00	Delta-Tone 2c gris / RNS:480h Delta-Tone 2c silver / NSS:480h
01	Zn 8µ min, pas. transparente, sellado, lubricado / RNS:384h Zn plated 8µ min, colourless pas., sealed, lubricated / NSS:384h
02	Sin Without
03	Magni 565 gris 1.1 / RNS:840h Magni 565 grey 1.1 / NSS:840h



El proceso de montaje en automático de la pieza requiere previamente la consulta a A.Raymond Tecniacero.  
Automatic processing of the part requires prior consultation with A.Raymond Tecniacero.

**CONDICIONES DE MONTAJE:**

- Adecuado para paneles espesor=0,8-4mm.
- Fuerza de entrada/montaje=55N.Max.(panel esp.4mm.)
- Esfuerzo salida=90N.Min.(panel esp. 0,8mm.)
- Torque resistente=10,4Nm.Min.

**ASSEMBLY CONDITIONS:**

- Suitable for panels thickness=0,8-4mm.
- Push on force=55N.Max.(panel thickness 4mm.)
- Pull out force=90N.Min.(panel thickness 0,8mm.)
- Prevailing Torque=10,4Nm.Min.

Ed	-	Actualizar I-Way; I-Way update.	24.04.13	JPO
REV.	Quant.	Indice / revision description	Date	Name



Ctra. Manresa a Berga km 0,5  
Spain - 08272 Sant Fruitós de Bages  
Tel +34 938 771 314  
Fax +34 938 770 260

Si tuvieran problemas de comprension, por favor soliciten la version espanola a ARaymond antes de usar este plano.  
"CONDITIONS OF USE"

This drawing and all information (the "Drawing") disclosed are the exclusive property of A.Raymond. By using this Drawing the Addressee acknowledge and accept that this Drawing (1) is covered by A.Raymond intellectual property rights or know-how and (2) is provided under the following conditions who represent a Deposit Agreement. This Drawing is for Addressee internal use only limited to its estimation. Without prior written consent of A.Raymond, no permission or rights for any purpose, is hereby granted, such as, without any limitation, (1) the copy, in part or entirely (2) and/or the presentation, in part or entirely, to any other third party outside the Addressee company or in the company but with no interest (3) and/or the distribution of the Drawings, in part or entirely, in any medium (4) and/or the creation of any derivative work. In case of breach of these conditions, Addressee shall indemnify A.Raymond from and against all damages (compensatory or consequential), costs, expenses and charges, caused or arising out of or attributable to its willful misconduct, fraud, negligence, infringement of A.Raymond Intellectual Property rights. If the Addressee does not accept these conditions, please notify A.Raymond sender immediately.

Ref. patentes / Patent rights  
Codigo SAFIX / Classification **AABCC**

Nº Proyecto / Project No.  
Sustituye / Origin  
Resp de proyecto / Project Manager **ROCA.I**

Escala / scale **2:1**  
Format **A3**  
Tolerancias generales / General tolerance  
Dimension Angle  
Cf nota Cf nota  
Fecha / date **24.04.2013**  
Preparado por / Prepared by **PORTELLA.J**

ALL DIMENSIONS ARE IN MILLIMETERS  
Aprobado / Approved **20130603154359**  
Espesor mat. / Mat. thickness **0,80**  
Volumen / volume (mm³) **555,1**  
Peso / Weight (g) **4,4**

Acabado / finish  
**See parts list**  
**Ver dibujo**  
Codigo acad. / finish code

Tratamiento mat. / Material treatment  
**Templado bainítico 420-520 HV**  
**Austempered 420-520 HV**

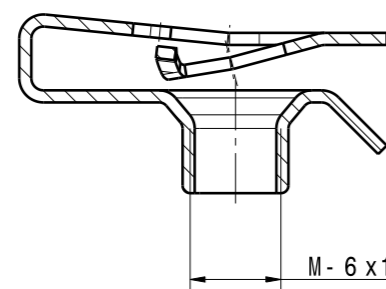
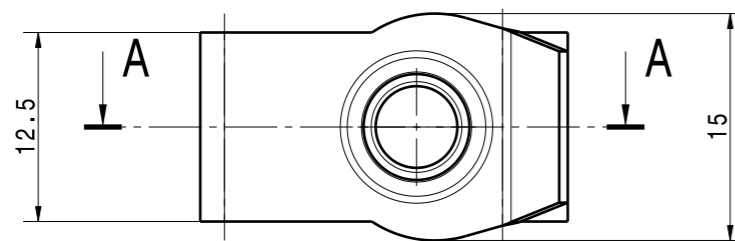
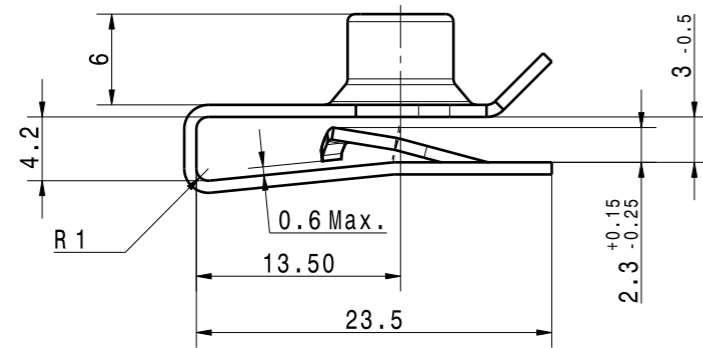
Material / Material  
**C45E EN 10132-3**  
Codigo mat. / Mat. code

Denominación / Title  
**Tuerca métrica (M-6x1)**  
**Metric pitch nut (M-6x1)**

Número /Part no.  
**151854-0-00**  
Tipo dibujo / Drawing type  
**C-Customer**

Ref. cliente / Customer part no.  
Hoja / Sheet **1/1**

CAD system & version **CATIA V5 R19 SP9**  
Nombre fichero / Filename **151854-0C00**



VISTA 3D. / (3D VIEW)

Scale 1:1

VERIFICAR LA ESCALA DESPUÉS DE LA FOTOCOPIA / BEWARE SCALE AFTER COPY

>400 <= 1000	±2
>120 <= 400	±1.5
> 30 <= 120	±1
> 6 <= 30	±0.5
<= 6	±0.25
Angulo / Angle	±3°

Tolerancias generales para cotas sin especificar.  
General tolerances for nominal dimensions without specified tolerances.