

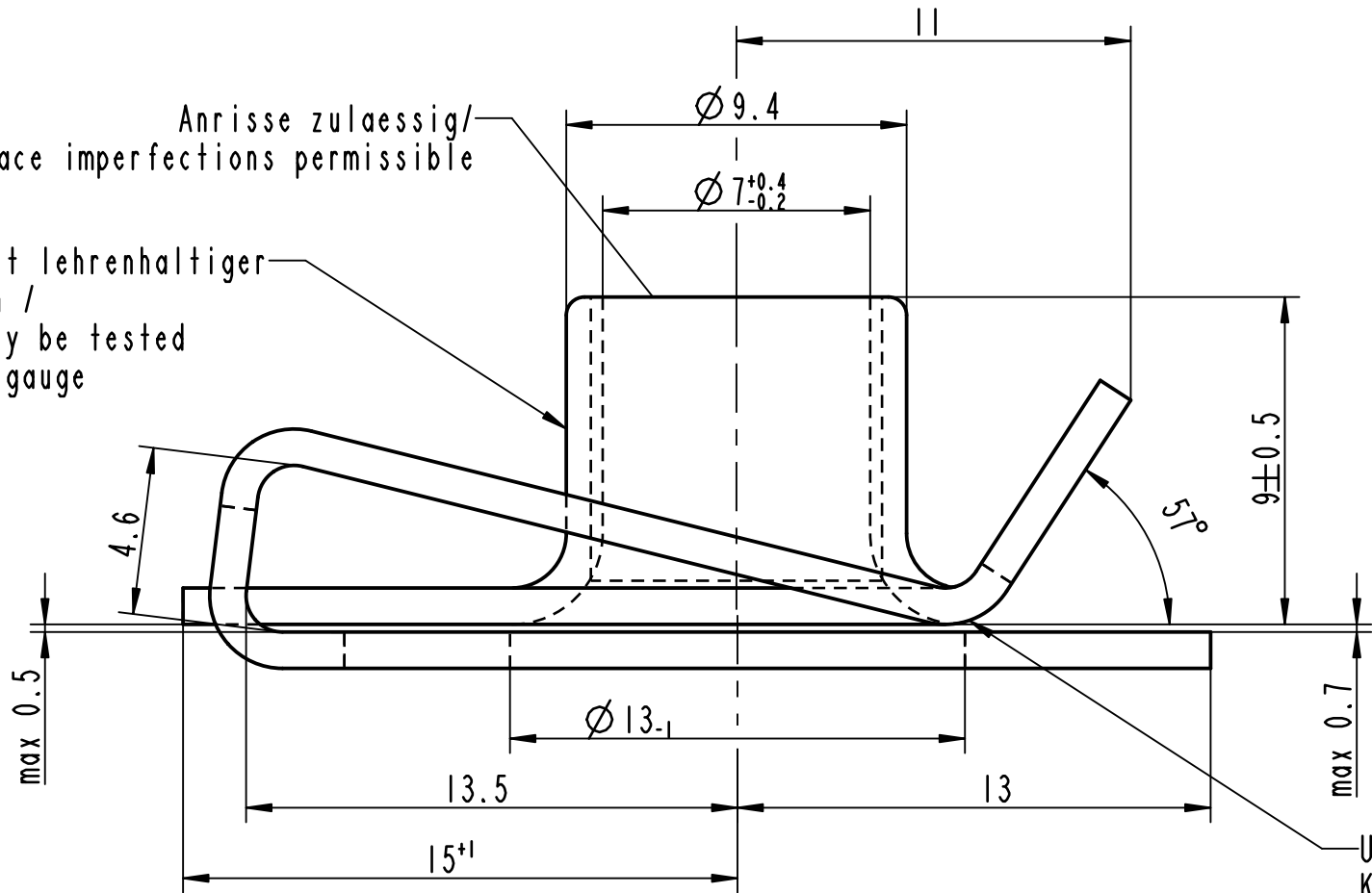
Vor Auslegung einer automatisierten Verarbeitung des Teils sollte Ruecksprache mit Fa. A.Raymond gehalten werden.
Fully automatic processing of the part requires prior consultation with A.Raymond GmbH.

Schwergaengigkeit des Gewindes durch metallhaltige Korrosionsschutzbeschichtung zulaessig / slow thread engagement caused by the surface finish permissible

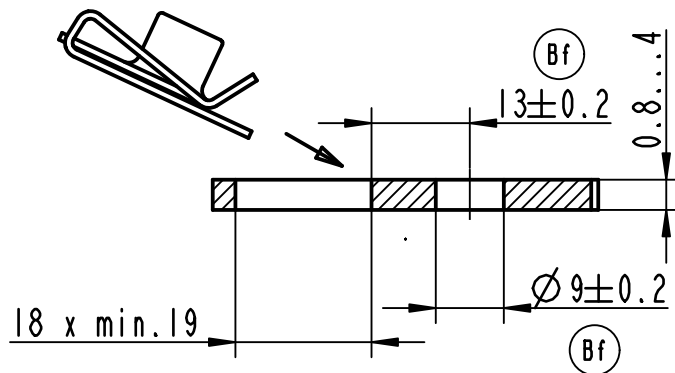
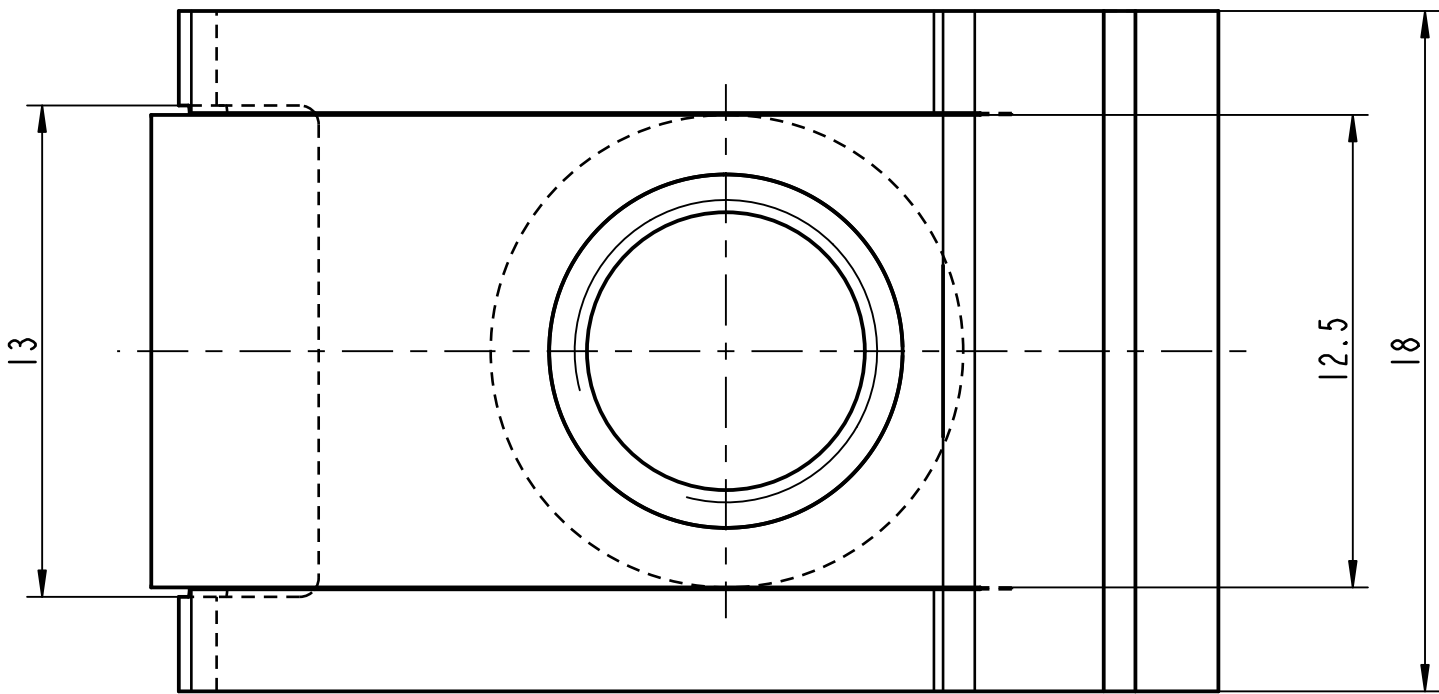
Anrisse zulaessig/
surface imperfections permissible

Gewindedurchzug kann nur mit lehrenhaltiger M8 Schraube geprueft werden / the thread strength can only be tested with a calibrated M8 screw gauge

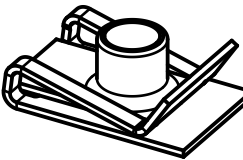
Be



Ueberbrueckung der Oeffnung durch metallhaltige Korrosionsschutzbeschichtung zulaessig / surface finish bridging permissible



Einbausituation/
assembly situation
1:1



Isometrische Ansicht /
isometric view
1:1

-	-	-	-	-
-	-	-	-	-
-	-	-	-	-
-	-	-	-	-
-	-	-	-	-
-	-	-	-	-
Bf	2x	Toleranzen der Einbausituation hinzugefuegt	10.08.11	SCH
Be	1x	Notiz ueberarbeitet / note revised	10.02.11	SCH
Bd	-	Zeichnung ueberarbeitet nach AR-Gruppenstandard, Teil unveraendert	19.08.10	SCH
-	-	Oberflaechevariante 02 entfernt	-	-

Rev.	Anzahl/ quantity	Aenderungsbeschreibung / modification description	Datum/date	Name
------	---------------------	---	------------	------

ARaymond
A RAYMOND GmbH & Co.KG

Teichstrasse 57
Germany - 79511 Loerrach
Phone +49 (0) 7621 174-0
Fax +49 (0) 7621 174-225

Bei Verstaendnisproblemen beantragen Sie bitte beim Absender die deutsche Fassung vor jeder Anwendung.
"CONDITIONS OF USE"
This drawing and all information (the "Drawing") disclosed are the exclusive property of A.Raymond.
By using this Drawing the Addressee acknowledges and accepts that this Drawing
(1) is covered by A.Raymond' Intellectual property rights or know-how and
(2) is provided under the following conditions who represent a Deposit Agreement.
This Drawing is for Addressee' Internal use only limited to its estimation.
Without prior written consent of A.Raymond, no permission or rights for any purpose, is hereby granted, such as, without any limitation,
(1) the copy, in part or entirely,
(2) and/or the presentation, in part or entirely, to any other third party outside the Addressee' company or in the company but with no interest
(3) and/or the distribution of the Drawing, in part or entirely, in any medium
(4) and/or the creation of any derivative work.
In case of breach of these conditions, Addressee shall indemnify A.Raymond from and against all damages (compensatory or consequential),
costs, expenses and charges, caused or arising out of or attributable to its willful misconduct, fraud, negligence, infringement of
A.Raymond' Intellectual property rights. If the Addressee does not accept these conditions, please notify A.Raymond' sender immediately.

Schutzrechte/
patent rights vorbehalten / all rights reserved

Ersatz fuer/
substitute for 013965.C.01/Bc/12.12.07 Entw.Ref./
dev.ref.

Masstab/
scale 5:1 Format A2 Allgemeintoleranz/
general tolerance ±0.3 / ±5° Datum/
date 19.08.2010

Projektion / projection ALL DIMENSIONS ARE
IN MILLIMETERS Erstellt von/
prepared by Schmid

Blechteil/
met. thickness 1.00 Volumen/
volume (mm³) 998.1 Gewicht/
weight (g) 7.9

Oberfl./
finish phosphatiert / impraegniert
phosphated / oiled

Werkstoffbehandl./
material treatment zwischenstufenverguetet / austempered
365 ... 465 HV 5

Werkstoff/
material C45E DIN EN 10132-3

Benennung/
title Blechmutter
fuer Gewinde M8
sheet metal nut
for thread M8

Teil-Nr./
part no. 013965-0-03

Kundenteile-Nr. / customer part no. - Blatt / sheet 1 / 1

CAD system & version ProE WF4 Dateiname / filename 013965-0C00

013965-0-09	verzinkt / passiviert farblos / Versiegelung farblos zinc plated / passivated colourless / sealed colourless	3251
013965-0-08	metallhaltige Korrosionsschutzbeschichtung, Farbe silber metallic corrosion protection coated, colour silver	5412
013965-0-07	metallhaltige Korrosionsschutzbeschichtung, Farbe silber metallic corrosion protection coated, colour silver	5410
013965-0-06	verzinkt / passiviert farblos zinc plated / passivated colourless	3250
013965-0-05	metallhaltige Korrosionsschutzbeschichtung, Farbe schwarz metallic corrosion protection coated, colour black	5451
013965-0-04	metallhaltige Korrosionsschutzbeschichtung, Farbe silber metallic corrosion protection coated, colour silver	5440
Teil-Nr. / part no.	Oberflaeche / Farbe / finish / colour	Oberfl. Code/ finish code
Ausfuhrung / Execution		

